



Curriculum Location SolidWorks 2011

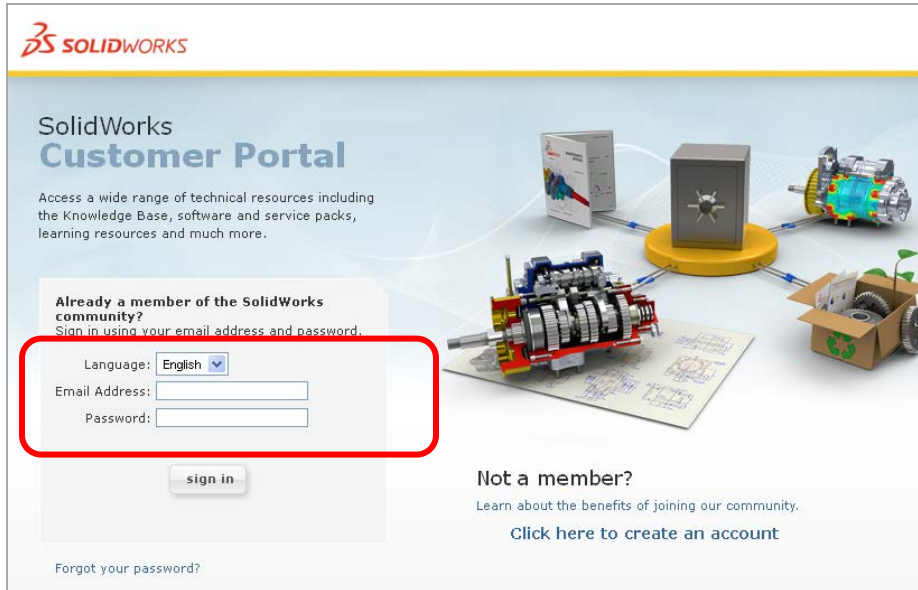
INSTRUCTORS CURRICULUM *Note: An internet connection is required to access content*

1. Launch SolidWorks Education Edition 2011-2012
2. Click on the Home Button (see 1 below)
3. Select "Instructors Curriculum" (see 2 below)



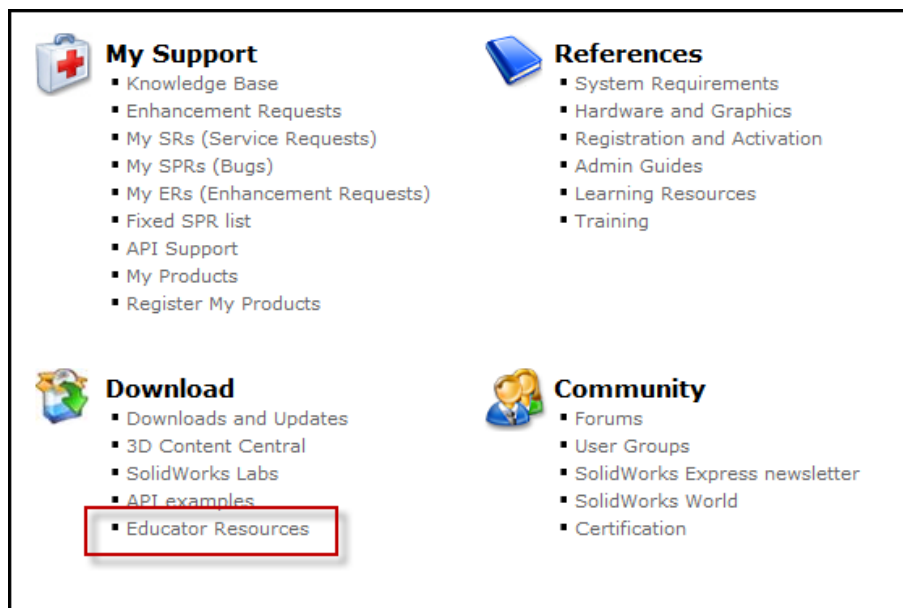
4. SolidWorks Customer Portal will appear in web browser (see below)
5. Login to Customer Portal

Note: If first time user, follow instructions in red box below. SolidWorks Education Edition serial number and subscription service is required to access the Instructor Content.



6. After login, Customer Portal will appear (see below)
7. Under **Download**, click on “Educator Resources”

Note: This selection will be grayed out if there is not a SolidWorks serial number associated with the account or the account is not under active SolidWorks subscription service.



8. After selection you will find the SolidWorks Instructor Curriculum

Home > Support > Learning Resources > Educator Resources 2011-2012*

Educator Resources 2011-2012*

Educator references including lesson plans, PowerPoint presentations, student goals, vocabulary, and student assessments. These materials are provided in a combination of project-based and topic-based formats.

Note: These Educator Resources are for SolidWorks academic year 2011-2012. For SolidWorks 2010 resources, [click here](#).

EDU Curriculum Introduction (2011)

Overview of the guides and resources listed below.

Description	Type	ENG	FRA	DEU	ITA	ESP	JPN	CHS	CHT	PTB	SVE	KOR
Curriculum Introduction		X	-	-	-	-	-	-	-	-	-	-
Resources		X	-	-	-	-	-	-	-	-	-	-

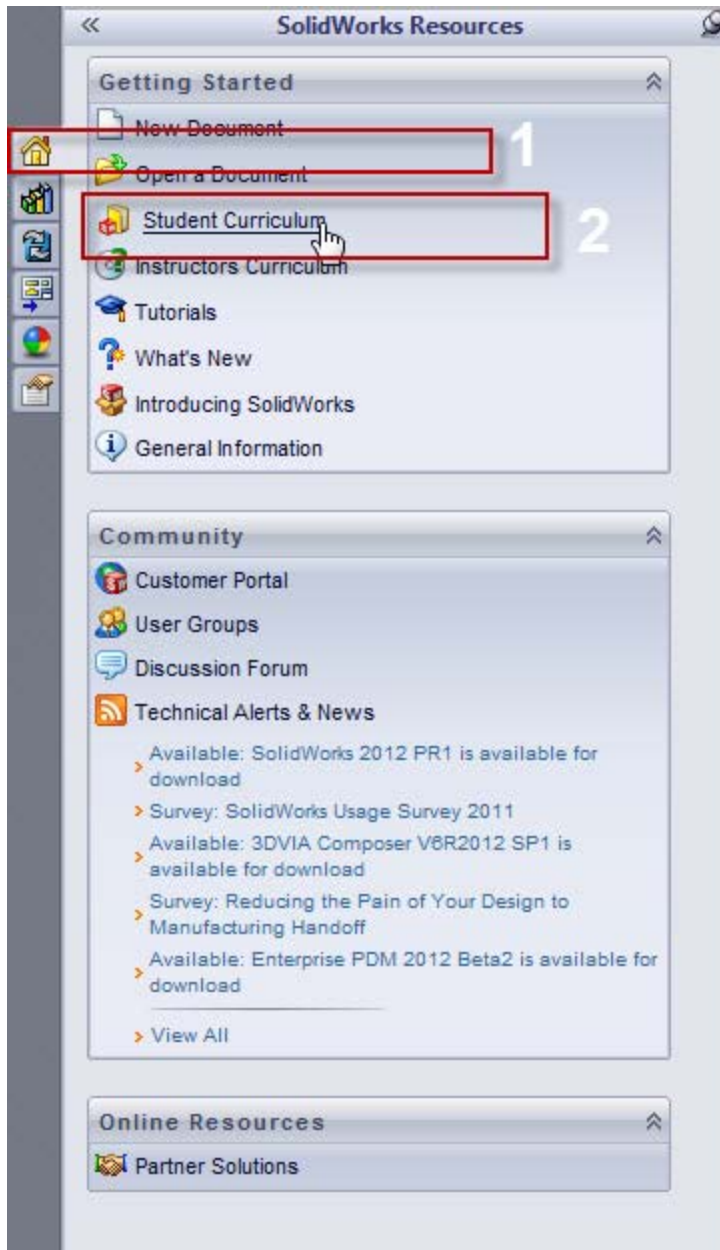
SolidWorks Instructor/Student Guide (2011)

Includes lesson plans, presentations, student goals, vocabulary, and assessments.

Description	Type	ENG	FRA	DEU	ITA	NOR	ESP	JPN	CHS	CHT	PTB	SVE	RUS	KOR	Dutch
Student Guide		X	X	X	X	X	X	X	X	X	X	X	X	X	X
Student Lesson/Model Files		X	-	-	-	-	-	-	-	-	-	-	-	-	-
Teacher Lesson/Model Files		X	-	-	-	-	-	-	-	-	-	-	-	-	-
Instructor Guide		X	X	X	X	X	X	X	X	X	X	X	X	X	X
Instructor Presentation		X	X	X	X	X	X	X	X	X	X	X	X	X	X

STUDENT CURRICULUM *Note: An internet connection is required to access content*

1. Launch SolidWorks Education Edition 2011-2012
2. Click on Home(see 1 below)
3. Click on Student Curriculum (see 2 below)



4. Expand Solid Works Educator Curriculum.
5. Selection of various student curriculum is available.

